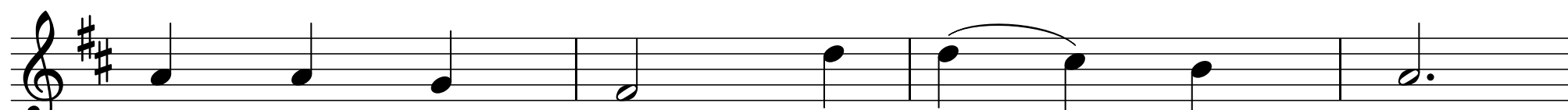



1. O Mas - ter, let me walk with thee



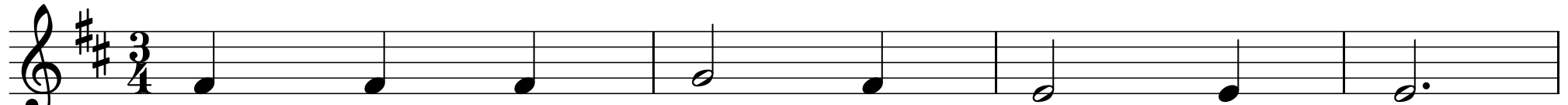
in low - ly paths of ser - vice free;



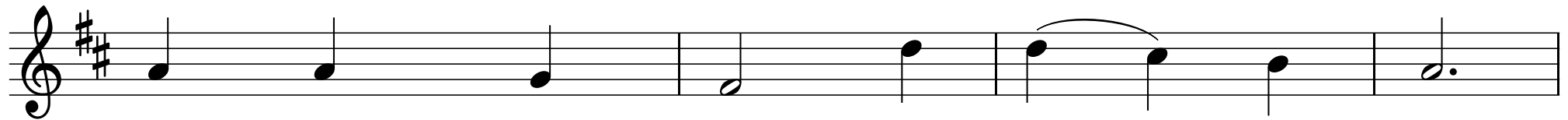
tell me thy se - cret; help me bear



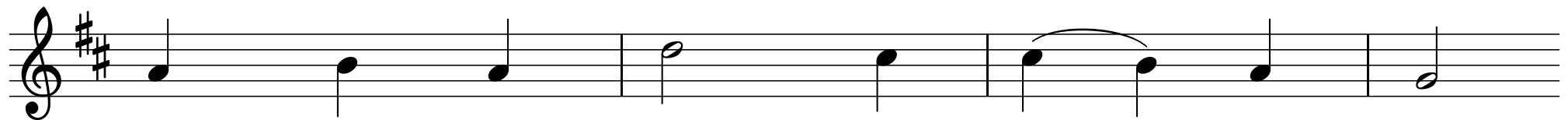
the strain of toil, the fret of care.



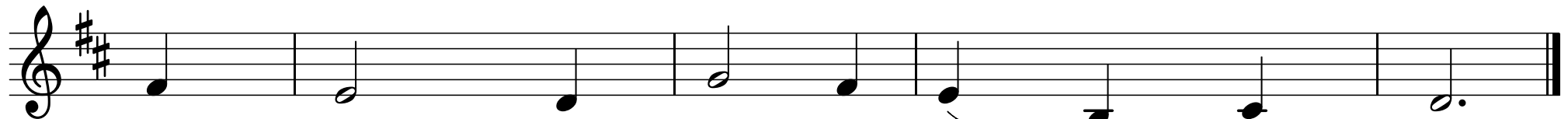
2. Help me the slow of heart to move



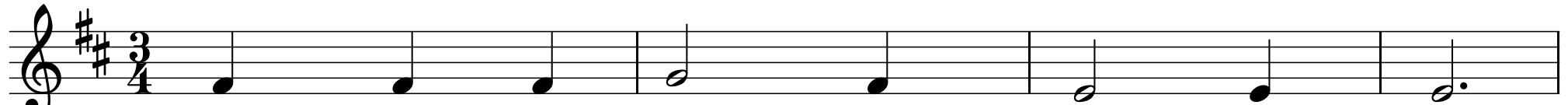
by some clear, win - ning word of love;



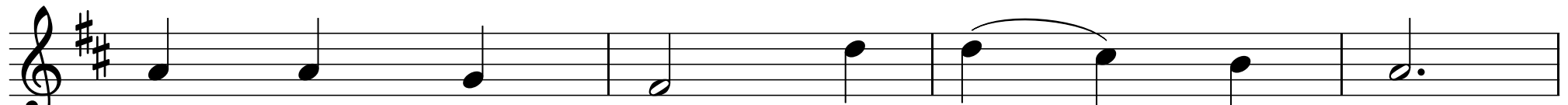
teach me the way - ward feet to stay,



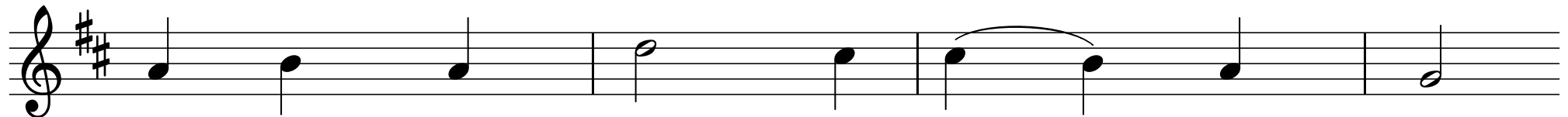
and guide them in the home - ward way.



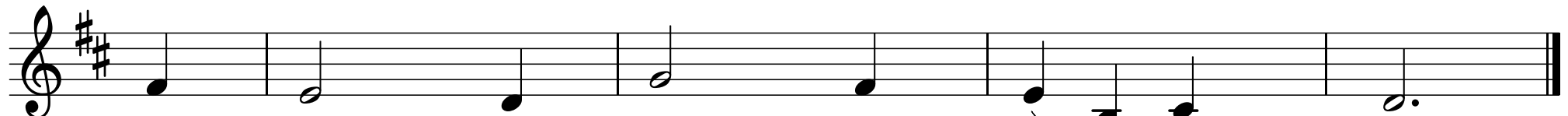
3. Teach me thy pa - tience, still with thee




in clos - er, dear - er com - pa - ny,



in work that keeps faith sweet and strong,




in trust that tri - umphs o - ver wrong.




4. In hope that sends a shin - ing ray

The first musical staff is in treble clef, key of D major (two sharps), and 3/4 time. It contains four measures of music: a quarter note G4, a quarter note A4, a quarter note B4, and a dotted quarter note C5.



far down the fu - ture's broad - ening way;

The second musical staff continues the melody. It contains four measures: a quarter note G4, a quarter note A4, a quarter note B4, and a dotted quarter note C5. The final note is tied to the first note of the next staff.



in peace that on - ly thou canst give,

The third musical staff continues the melody. It contains four measures: a quarter note G4, a quarter note A4, a quarter note B4, and a dotted quarter note C5. The final note is tied to the first note of the next staff.



with thee, O Mas - ter, let me live.

The fourth musical staff concludes the phrase. It contains four measures: a quarter note G4, a quarter note A4, a quarter note B4, and a dotted quarter note C5. The final note is tied to the first note of the next staff.